

# MEANINGFUL LIFE

for adults with intellectual and developmental disabilities

## 2023 Hi-Hope Service Center Review

### DAY PROGRAMS

consist of a lifelong learning curriculum that assists individuals in maintaining existing skills and learning new skills. Program provides:

- On-site activities with health & wellness support, use of computers, art activities and much more.
- Off-site activities help individuals engage in and contribute to their community; such as, volunteering with programs like Meals on Wheels.

**158 INDIVIDUALS**  
RECEIVED COMMUNITY  
ACCESS SUPPORT



"Hi-Hope provided a place for our daughter to continue to learn and socialize. It's been wonderful for our family."  
Hi-Hope parent

### EMPLOYMENT PROGRAMS

help individuals with both supported and customized work experiences.

Program provides:

- Job discovery, placement, training and coaching
- Job readiness classes in local schools during the school year and in a summer camp format.

**50%** of the individuals looking for work successfully obtained jobs within 6 months!

**144 INDIVIDUALS** THROUGH THE GEORGIA VOCATIONAL REHABILITATION AGENCY AND THE DEPT. OF BEHAVIORAL HEALTH AND DEVELOPMENTAL DISABILITIES

→ **44 INDIVIDUALS** RECEIVED JOB DEVELOPMENT AND COACHING

→ **90 INDIVIDUALS** RECEIVED PRE-EMPLOYMENT AND TRANSITION SERVICES



"Our company is proud to support Hi-Hope's Employment program."  
Hi-Hope Employment Partner

### RESIDENTIAL PROGRAMS

Five group homes nestled in neighborhoods throughout Gwinnett County provide a long-term home for 20 individuals. A sixth home is being established and will serve an additional four individuals. The program provides:

- Independent housing, medical & nursing services, transportation services and training assistance in household care and activities of daily living.
- Professional staff 24-hours, 7 days a week, 365 days a year



"Hi-Hope provides the best care and is a safe haven. It can truly be called home."  
Hi-Hope parent



Help us help our individuals by donating at [hihopecenter.org](http://hihopecenter.org)



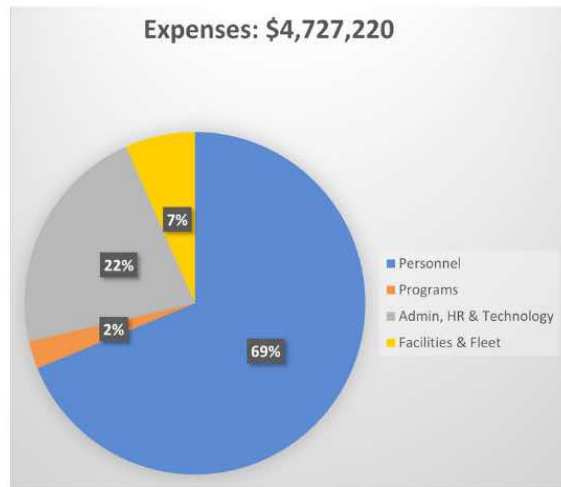
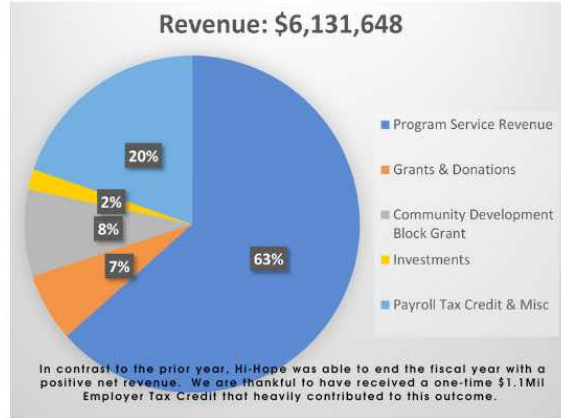
Across all Hi-Hope Service Center programs support teams are dedicated to providing...

- Case Management & Behavior Support
- Communication & Assistive technology
- Health and Nursing
- Advocacy
- Transportation

Learn more at [hihopecenter.org/support-services](http://hihopecenter.org/support-services)

**HI-HOPE TOUCHES  
167 INDIVIDUALS  
ACROSS ALL PROGRAMS.**

## FISCAL YEAR 2023 FINANCIALS



### Contact information

**Address:** 882 Hi Hope Road, Lawrenceville, GA 30043

**Email:** [Info@hihopecenter.org](mailto:Info@hihopecenter.org)

**Ways to Give:** [hihopecenter.org/donate](http://hihopecenter.org/donate)